



27 Mosspark Crescent, Dumfries, DG1 4PQ
2 Bedrooms | Guide Price £80,000

PROPERTY DESCRIPTION

This immaculate, bright and spacious two bedroom ground floor flat is situated in the popular residential area of Georgetown which offers a range of local amenities including Primary and Secondary Schools, Gillbrae medical centre with Chemist adjacent, two Grocery shops, Library, Post Office, Hairdressers, Play Parks, Nurseries and The Jolly Harvester Pub and Restaurant. There is also a regular bus route which runs to and from Dumfries Town Centre. The property benefits from full double glazing, recently installed wet room, gas central heating and off-street parking which together with a large low maintenance garden makes this an ideal first family home or perfect for those wishing to downsize.

Accommodation

Ground Floor: Entrance Vestibule, Hallway, Lounge, Kitchen, Bedroom One, Bedroom Two, Wet Room.

Gardens to front, rear and side

Outside: Shared footpath to the front. The garden to the rear is fully enclosed with timber fencing and hedging trees, paved patio area. Allocated parking space.

Viewing: By appointment. Contact the agents on 01387 266250 (option 2)

KEY FEATURES

- Two double bedrooms with built-in wardrobes
- Double glazed windows throughout
- Modern wet room
- Low maintenance rear garden
- Parking space at the rear
- Gas central heating
- Ground floor flat with own door

GGM&W



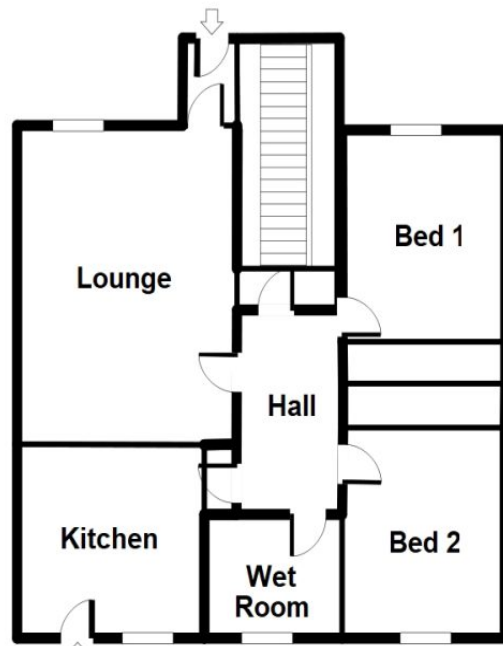
Accommodation

Entrance Vestibule 1.45m x 0.96m uPVC entrance door. Fitted carpet.





FLOOR PLANS



(for illustration purposes only)